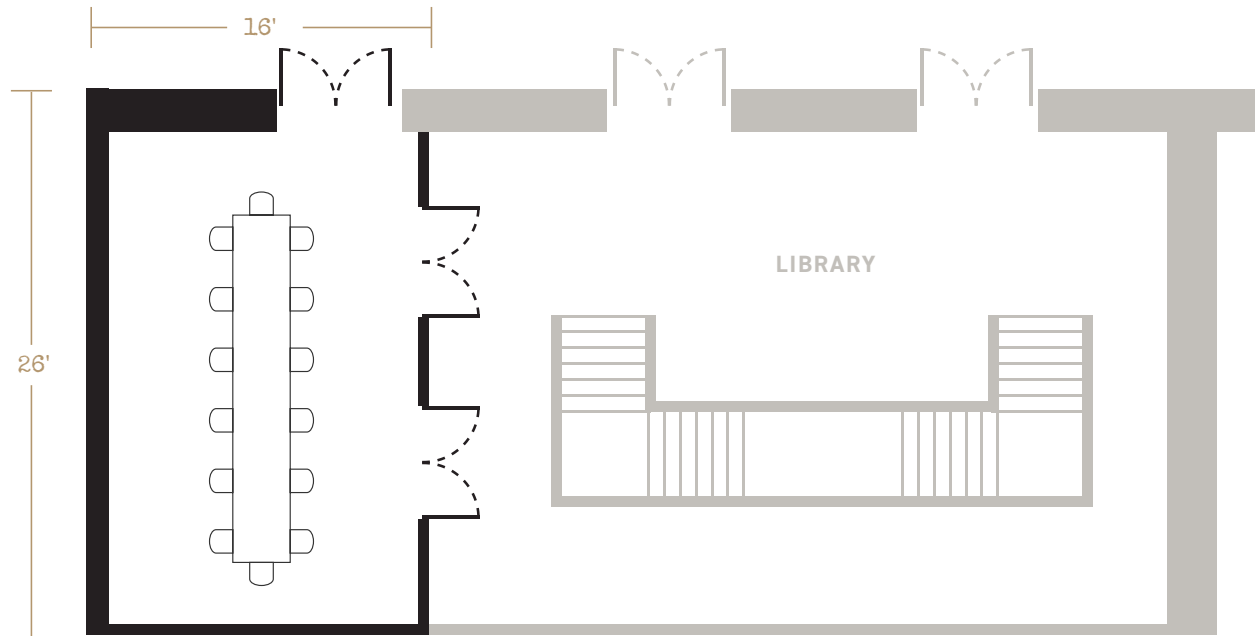




— HOTEL —
E M M A



OAK ROOM FLOORPLAN

A spacious English antique table commands the Boardroom, where up to 14 people can gather for business or social events in an urbane setting.

- Rustic one-hundred-year-old brick walls
- French doors provide an expansive view into Emma's extraordinary library
- Advanced AV equipment available

| HOTEL EMMA | sq ft | length | width | ceiling height | theater | classroom 3/6" table | conf/ u-Shape | banquet | feast | reception |
|------------|-------|--------|-------|----------------|---------|----------------------|---------------|---------|-------|-----------|
| OAK Room | 416 | 26' | 16' | 12' | n/a | n/a | 14 | n/a | n/a | n/a |

"FIRST WE EAT. THEN WE DO EVERYTHING ELSE."

-MFK FISHER

A BOUTIQUE HOTEL AND CHEF-LED CULINARY DESTINATION.

Hotel Emma is a 146-room boutique hotel housed in the former Pearl Brewery's landmark Brewhouse. The Hotel and Pearl's campus on the Northern Reach of the San Antonio River are one-of-a-kind destinations for social and corporate events of all kinds. Every venue has its own personality, with floor-to-ceiling windows and intriguing architectural details incorporating vintage elements from the Brewery's past life. A significant business meeting, an intimate wedding, or a boisterous celebration of life in general — bring it to Hotel Emma.



- 6,160 sf indoor spaces
- 1,521 sf outdoor spaces
- Designed by Roman & Williams (The Ace NYC, The Standard Highline)
- Rooftop Pool & Terrace
- Onsite valet parking
- Culinary Concierge

- Chef-designed menus and chef-led catering
- Chef Geronimo Lopez – Hotel Emma Executive Chef
- 10 private suites for social events, business receptions
- Venues with natural

- lighting and the ambiance of a private residence
- Pre-function exhibition kitchen with French Lacanche range
- Private pre-event space with dining area, wet-bar, and bathroom

Hotel Emma is a gathering place for people who are passionate about food and eager to experience the authentic spirit of San Antonio. Comfortable and unconventional, the hotel's historical ambiance enhances a new standard of South Texas luxury and geniality. Guests are immersed in rich social experiences that showcase rare culinary wonders and the nuances of local culture.



EVENT INFORMATION For more information, visit www.thehotelemma.com/venues

| HOTEL EMMA | sq ft | length | width | ceiling height | theater | classroom 3/6" table | conf/ u-Shape | banquet | feast | reception |
|-------------------------|-------|--------|-------|----------------|---------|----------------------|---------------|---------|-------|-----------|
| Elephant Cellar | 3250 | 80' | 41' | 19' | 200 | 120 | 60 | 150 | 150 | 200 |
| Cellar J | 1050 | 42' | 25' | 16' | 80 | 60 | 40 | 80 | n/a | 125 |
| Cellar K | 575 | 25' | 23' | 16' | 48 | 25 | 18 | 40 | n/a | 75 |
| Gold Room | 840 | 35' | 24' | 9' | 60 | 40 | 28 | 50 | n/a | 100 |
| OAK Room | 416 | 26' | 16' | 12' | n/a | n/a | 14 | n/a | n/a | n/a |
| Supper's Private Dining | 408 | 24' | 17' | 12' | n/a | n/a | 22 | 30 | n/a | 40 |
| Courtyard | 1521 | 39' | 39' | n/a | 150 | n/a | n/a | 80 | 60 | 120 |
| Brewmeister's Office | 786 | 45' | 15' | 12-15' | n/a | n/a | 6 | n/a | n/a | n/a |
| PEARL CAMPUS | sq ft | length | width | ceiling height | theater | classroom 3/6" table | conf/ u-Shape | banquet | feast | reception |
| Studio | 3614 | 46' | 46' | 9'-10' | 100 | 80 | 72/52 | 140 | n/a | 100 |