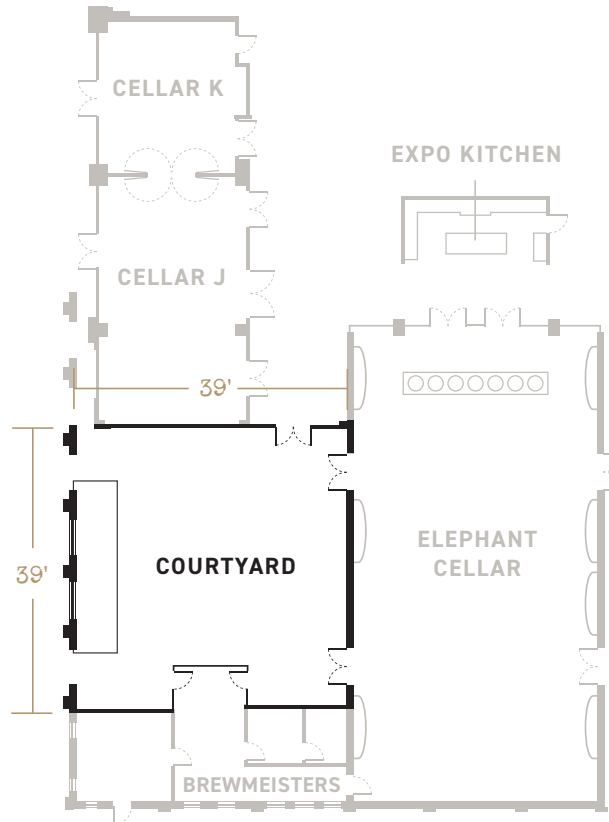




— HOTEL —  
**EMMA**



## COURTYARD FLOORPLAN

Gorgeously landscaped, our refined outdoor setting epitomizes casual elegance.

- The focal point fountain's spout is a repurposed brass fitting from the Brewery
- The Courtyard be reserved on its own or as a romantic annex for events in the Elephant Cellar or Cellar J
- 1500 sf Courtyard welcomes up to 150 people outdoors
- May be paired with the Brewmeister's Office, a quiet, private "green room" for staging/dressing (included, if available)

HOTEL EMMA	sq ft	length	width	ceiling height	theater	classroom 3/6" table	conf/ u-Shape	banquet	feast	reception
Courtyard	1521	39'	39'	n/a	150	n/a	n/a	80	60	120

# "FIRST WE EAT. THEN WE DO EVERYTHING ELSE."

-MFK FISHER

## A BOUTIQUE HOTEL AND CHEF-LED CULINARY DESTINATION.

Hotel Emma is a 146-room boutique hotel housed in the former Pearl Brewery's landmark Brewhouse. The Hotel and Pearl's campus on the Northern Reach of the San Antonio River are one-of-a-kind destinations for social and corporate events of all kinds. Every venue has its own personality, with floor-to-ceiling windows and intriguing architectural details incorporating vintage elements from the Brewery's past life. A significant business meeting, an intimate wedding, or a boisterous celebration of life in general — bring it to Hotel Emma.



- 6,160 sf indoor spaces
- 1,521 sf outdoor spaces
- Designed by Roman & Williams (The Ace NYC, The Standard Highline)
- Rooftop Pool & Terrace
- Onsite valet parking
- Culinary Concierge
- Chef-designed menus and chef-led catering
- Chef Geronimo Lopez – Hotel Emma Executive Chef
- 10 private suites for social events, business receptions
- Venues with natural lighting and the ambiance of a private residence
- Pre-function exhibition kitchen with French Lacanche range
- Private pre-event space with dining area, wet-bar, and bathroom

Hotel Emma is a gathering place for people who are passionate about food and eager to experience the authentic spirit of San Antonio. Comfortable and unconventional, the hotel's historical ambiance enhances a new standard of South Texas luxury and geniality. Guests are immersed in rich social experiences that showcase rare culinary wonders and the nuances of local culture.



## EVENT INFORMATION For more information, visit [www.thehotelemma.com/venues](http://www.thehotelemma.com/venues)

HOTEL EMMA	sq ft	length	width	ceiling height	theater	classroom 3/6" table	conf/ u-Shape	banquet	feast	reception
Elephant Cellar	3250	80'	41'	19'	200	120	60	150	150	200
Cellar J	1050	42'	25'	16'	80	60	40	80	n/a	125
Cellar K	575	25'	23'	16'	48	25	18	40	n/a	75
Gold Room	840	35'	24'	9'	60	40	28	50	n/a	100
OAK Room	416	26'	16'	12'	n/a	n/a	14	n/a	n/a	n/a
Courtyard	1521	39'	39'	n/a	150	n/a	n/a	80	60	120
Brewmeister's Office	786	45'	15'	12-15'	n/a	n/a	6	n/a	n/a	n/a
Swiggle Key at Supper	408	23'	16'	11'	n/a	n/a	n/a	n/a	28	30