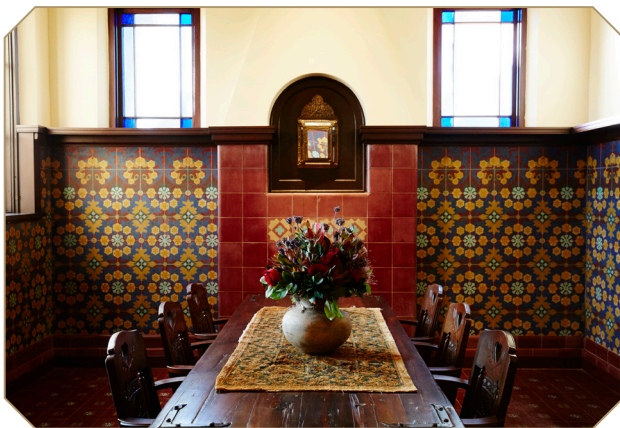
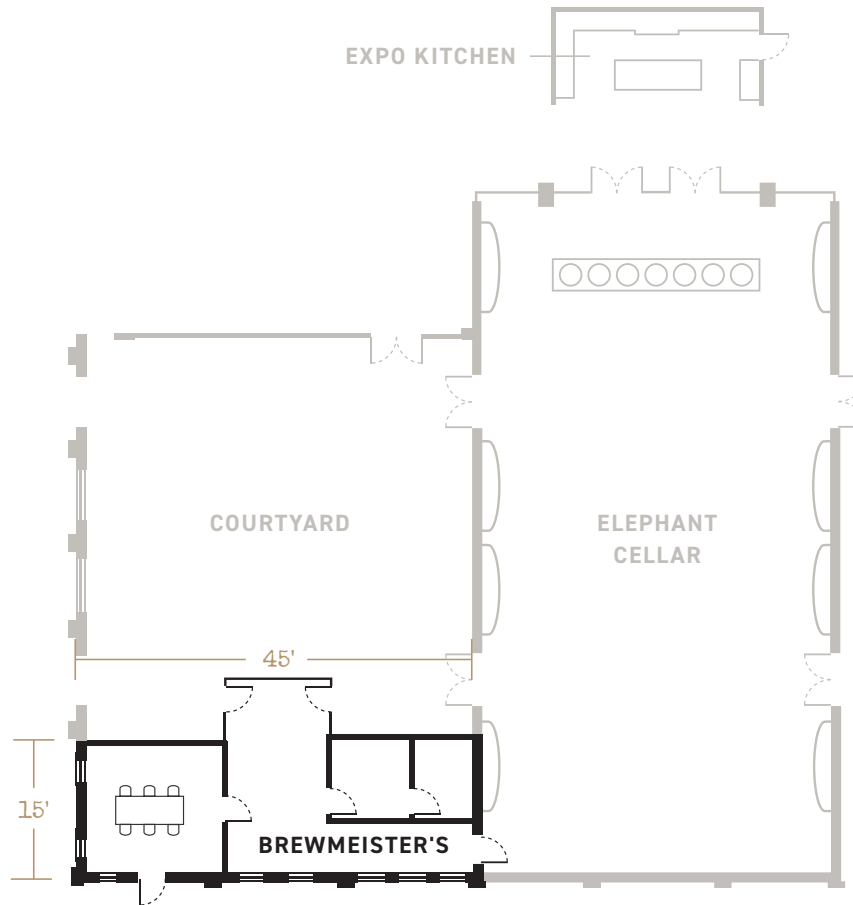




— HOTEL — E M M A



BREWMEISTER'S OFFICE FLOORPLAN

Convenient to the Courtyard and Elephant Cellar, Brewmeister's Office is a small versatile space.

- Beautifully-detailed room remains almost unchanged since 1939, evidenced by original floor and wall tiles, restored stained glass and ornamental plasterwork
- Private "green room" for staging/dressing
- Windows face Brewmeister's Alley
- Can access the Courtyard and/or Elephant Cellar
- May also be reserved on its own for small meetings

HOTEL EMMA	sq ft	length	width	ceiling height	theater	classroom 3/6" table	conf/ u-Shape	banquet	feast	reception
Brewmeister's Office	786	45'	15'	12-15'	n/a	n/a	6	n/a	n/a	n/a

"FIRST WE EAT. THEN WE DO EVERYTHING ELSE."

-MFK FISHER

A BOUTIQUE HOTEL AND CHEF-LED CULINARY DESTINATION.

Hotel Emma is a 146-room boutique hotel housed in the former Pearl Brewery's landmark Brewhouse. The Hotel and Pearl's campus on the Northern Reach of the San Antonio River are one-of-a-kind destinations for social and corporate events of all kinds. Every venue has its own personality, with floor-to-ceiling windows and intriguing architectural details incorporating vintage elements from the Brewery's past life. A significant business meeting, an intimate wedding, or a boisterous celebration of life in general — bring it to Hotel Emma.



- 6,160 sf indoor spaces
- 1,521 sf outdoor spaces
- Designed by Roman & Williams (The Ace NYC, The Standard Highline)
- Rooftop Pool & Terrace
- Onsite valet parking
- Culinary Concierge
- Chef-designed menus and chef-led catering
- Chef Geronimo Lopez – Hotel Emma Executive Chef
- 10 private suites for social events, business receptions
- Venues with natural lighting and the ambiance of a private residence
- Pre-function exhibition kitchen with French Lacanche range
- Private pre-event space with dining area, wet-bar, and bathroom

Hotel Emma is a gathering place for people who are passionate about food and eager to experience the authentic spirit of San Antonio. Comfortable and unconventional, the hotel's historical ambiance enhances a new standard of South Texas luxury and geniality. Guests are immersed in rich social experiences that showcase rare culinary wonders and the nuances of local culture.



EVENT INFORMATION For more information, visit www.thehotelemma.com/venues

HOTEL EMMA	sq ft	length	width	ceiling height	theater	classroom 3/6" table	conf/ u-Shape	banquet	feast	reception
Elephant Cellar	3250	80'	41'	19'	200	120	60	150	150	200
Cellar J	1050	42'	25'	16'	80	60	40	80	n/a	125
Cellar K	575	25'	23'	16'	48	25	18	40	n/a	75
Gold Room	840	35'	24'	9'	60	40	28	50	n/a	100
OAK Room	416	26'	16'	12'	n/a	n/a	14	n/a	n/a	n/a
Courtyard	1521	39'	39'	n/a	150	n/a	n/a	80	60	120
Brewmeister's Office	786	45'	15'	12-15'	n/a	n/a	6	n/a	n/a	n/a
Swiggle Key at Supper	408	23'	16'	11'	n/a	n/a	n/a	n/a	28	30